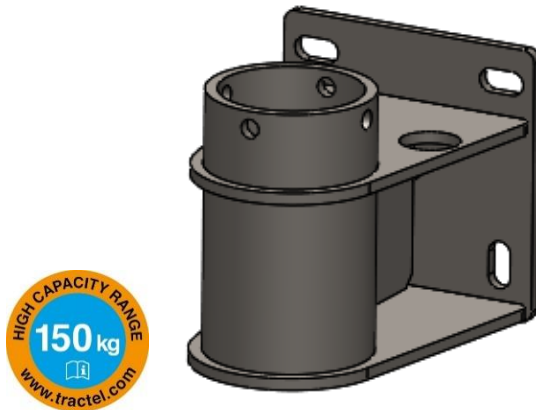


APPLICATIONS

The Davitrac™ or Davimast™ stainless steel clearance mural adapter is exclusively intended to be installed with the Davitrac™ or Davimast™ manufactured by Tractel®. This adapter allows the Davitrac™ or Davimast™ to be installed at any point on a vertical surface. It is equipped with 2 PPE anchoring points of 150 kg each, which can be used by 2 operators to secure themselves during the installation of the Davitrac™ or Davimast™.

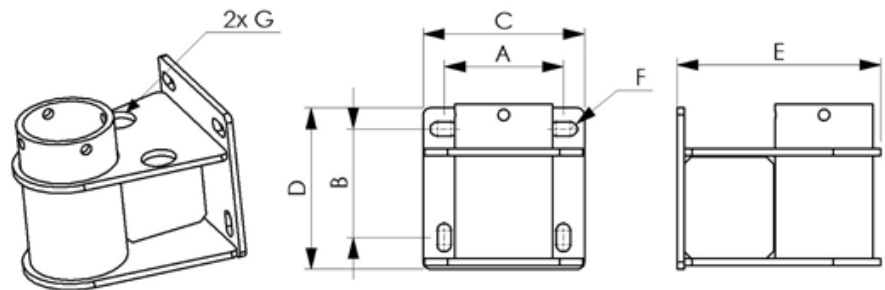


The Davitrac™ / Davimast™ clearance mural adapter is fixed to a vertical surface with 4 heavy duty chemical anchors with a diameter of 16 mm.

It can be installed without any specific tools and is quick and easy to install. It allows the Davitrac™ or Davimast™ to rotate 360°.

TECHNICAL CHARACTERISTICS

- Material: stainless steel 316 L
- Net weight :15.6 kg
- A: 170 mm
- B: 155 mm
- C: 230 mm
- D: 230 mm
- E: 291 mm
- F: 20 mm
- G: PPE anchoring point



APPLICABLE STANDARDS

- EN795-A:2012: Fall arrest anchor point,
- CEN/TS16415: Multi user of 150 kg

EXISTING PRODUCTS

Code	Description	Weight	Dimensions
218018	Stainless steel clearance wall adapter Davimast™ / Davitrac™	15.6 kg	230 x 230 x 291 mm

LOGISTIC INFORMATION

Code	Description	EAN Code	Weight (incl. packaging)	Packaging size
218018	Stainless steel clearance wall adapter Davimast™ / Davitrac™	3600232180487	15.7 kg	230 x 230 x 291 mm